

*'A brilliantly designed programme
– all wonderful pieces'*

*'The players...projected warm vibes
and established a real rapport
with the audience'*

Welcome to our 102nd season, and another great selection of music performed by some of today's finest chamber musicians. As well as masterpieces such as Mozart's C major String Quintet and Ravel's Piano Trio, there are several lesser-known works by Rossini, Saint-Saëns, Prokofiev and Poulenc, a handful of contemporary scores (among them a recent commission from the acclaimed film/TV composer George Fenton), and – in what is probably a first for ICMS – even a medley of Scottish folk music!

All these concerts take place in the marvellous acoustics of Great School (the main hall) at Ipswich School, and audience members are welcome to park for free in the school grounds on a first-come, first-served basis (see overleaf for a map and directions). As ever, we strongly encourage both adults and students to join the Society by taking advantage of our excellent-value season tickets, the prices of which have been held this year. There is also a Friends scheme for those who wish to support ICMS financially, and we are always pleased to hear from anyone who might be interested in sponsoring all or part of a particular concert.

The words quoted at the top of this page are typical of the enthusiastic feedback we regularly receive from our audiences. If you haven't already done so, why not come along and experience those warm ICMS vibes for yourself?

Ticket Prices

Single Tickets

Adult: £20
Student (19+): £5
18 & under: Free

Season Tickets

Adult: £70
Student (19+): £15

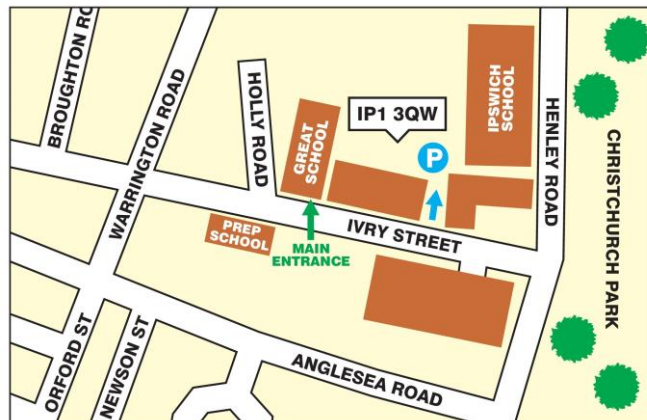
Single tickets are available on the door only. To buy season tickets in advance, please visit our website and click on 'Tickets & Venue'. All seats are unreserved.

Friends of ICMS

To become a Friend of Ipswich Chamber Music Society, please buy a season ticket and add a minimum donation of £25 to your remittance. The Friends play a vital role in helping us maintain our long tradition of high-quality concerts at affordable prices, and are individually acknowledged in our concert programmes unless otherwise requested.

How to find us

Great School is located on the corner of Ivory Street and Holly Road, Ipswich IP1 3QW. For free parking in the grounds of Ipswich School and/or step-free access to Great School, please use the vehicle entrance indicated in blue on the map below.



www.ipswichchambermusic.org.uk



Cover photo:
Trio Bohémo
(14 Nov)



102nd Season

2026-2027



SATURDAYS AT 7.30PM
Great School, Ipswich School

This Season's Concerts



17 OCTOBER 2026 AT 7.30PM

Harmoniemusik

Rossini Wind Quartet No. 1
Poulenc Wind Trio
Arnold Divertimento, Op. 37
Saint-Saëns Tarantella for Winds
Mozart Quintet for Piano & Winds, K. 452



14 NOVEMBER 2026 AT 7.30PM

Trio Bohémo

Haydn Piano Trio in E major, XV:28
Ravel Piano Trio
Marios Christou Dvorak in Cyprus
Smetana Piano Trio in G minor, Op. 15

16 JANUARY 2027 AT 7.30PM

Maxwell Quartet

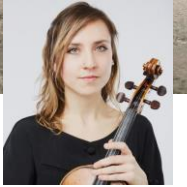
Haydn String Quartet in C major, Op. 20/2
Prokofiev String Quartet No. 2
Eleanor Alberga String Quartet No. 4
Maxwell Quartet Folk Music of Scotland



13 FEBRUARY 2027 AT 7.30PM

London Chamber Soloists

Debussy Sonata for flute, viola & harp
George Fenton New work (LCS commission)
Ravel (arr. Skaila Kanga) Sonatine
Rawsthorne Suite for flute, viola and harp
Cesar Secundino Triptych



6 MARCH 2027 AT 7.30PM

Gildas Quartet

with **Luba Tunnicliffe** viola

Caroline Shaw Punctum
Schubert String Quartet in A minor, D. 804 ('Rosamunde')
Mozart String Quintet in C major, K. 515



ICMS Committee 2026-27

Andrew Leach (chairman@ipswichchambermusic.org.uk),
Libby Cotton (secretary@ipswichchambermusic.org.uk),
Terry Bird, Viola Jones, Alan Loader, Sheila Pugh
(Treasurer), Martin Stevens